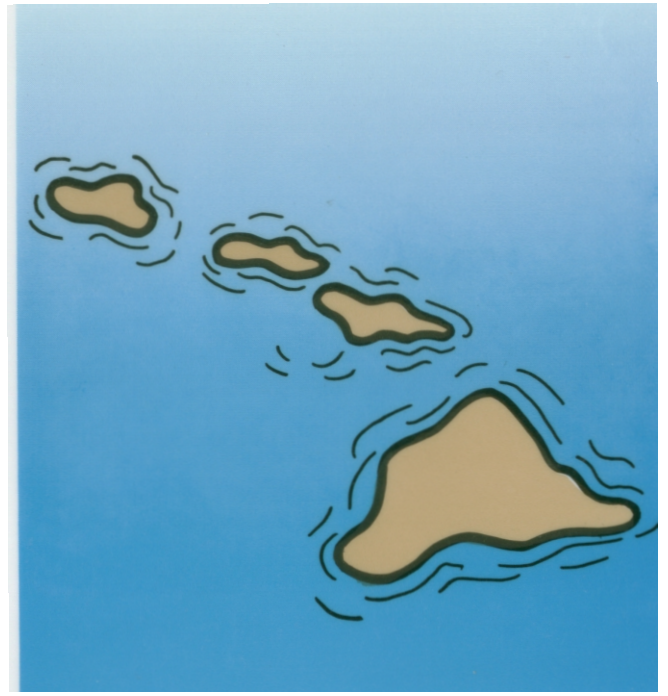


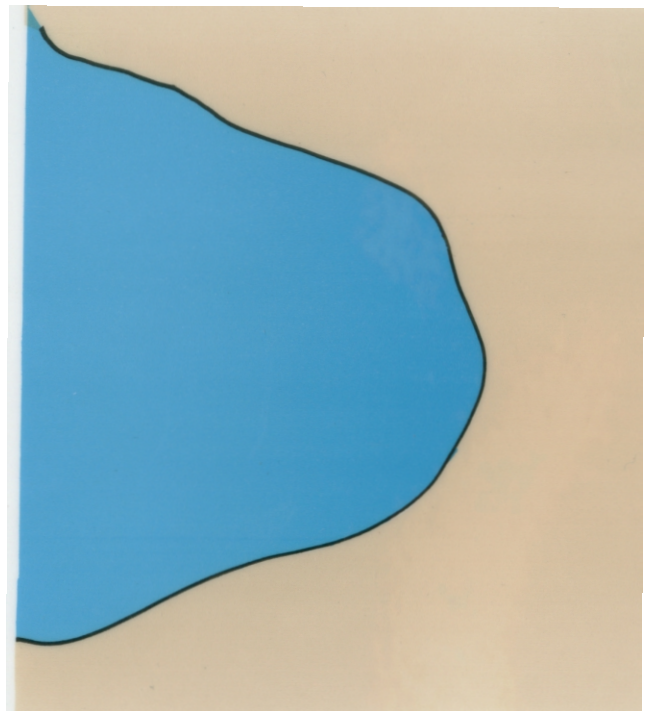
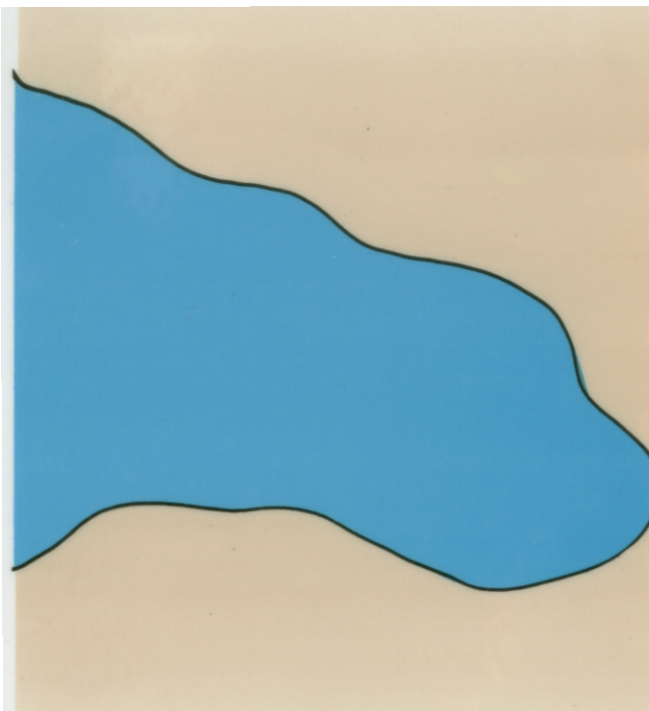
isthmus

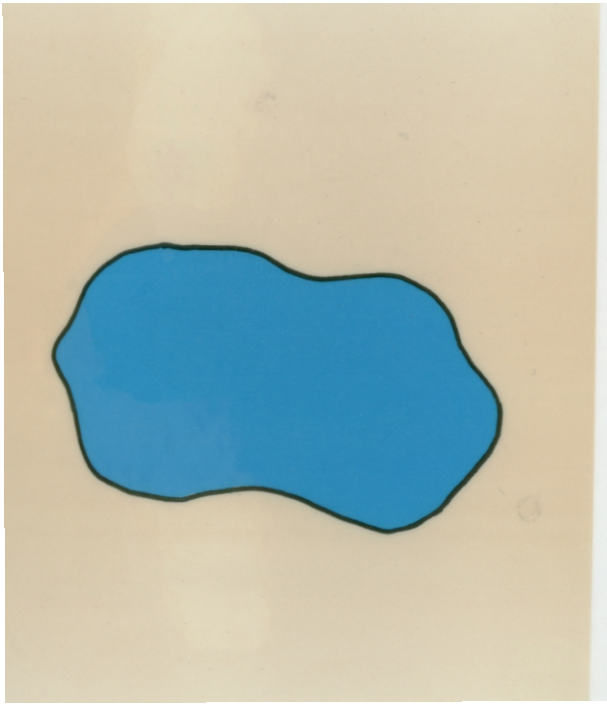
gulf



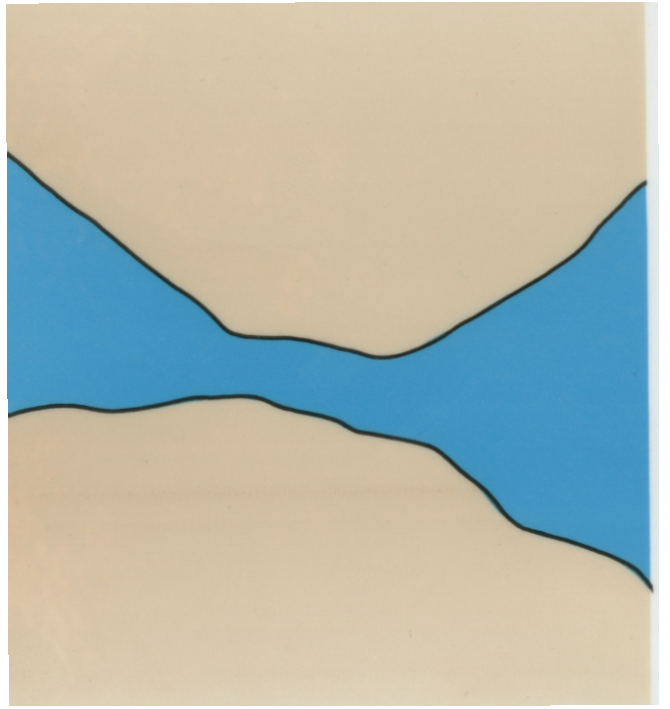
archipelago

bay



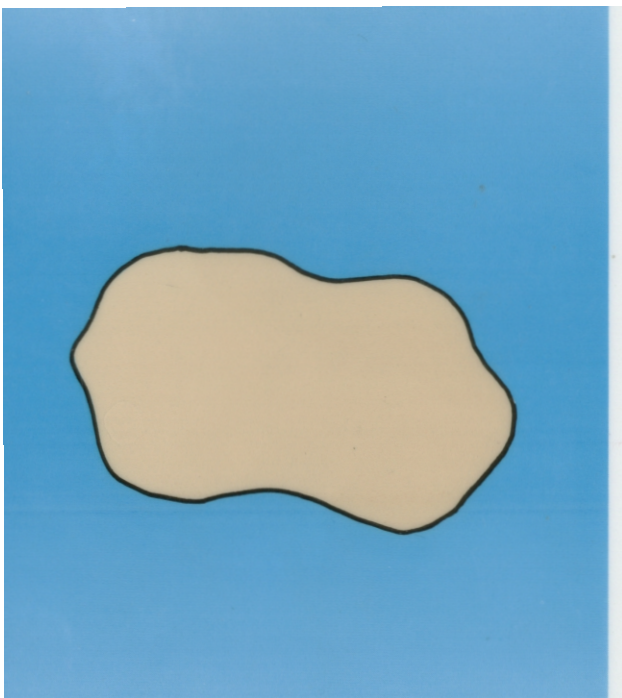


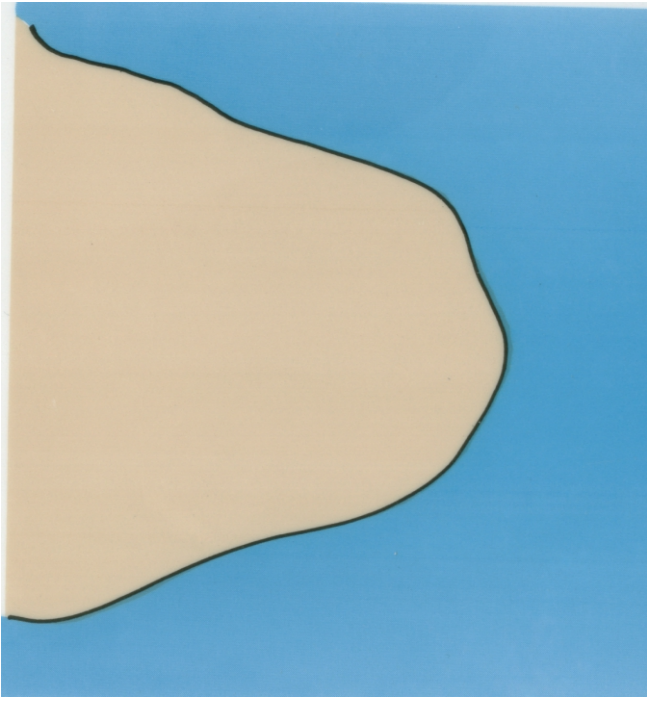
lake



strait

island



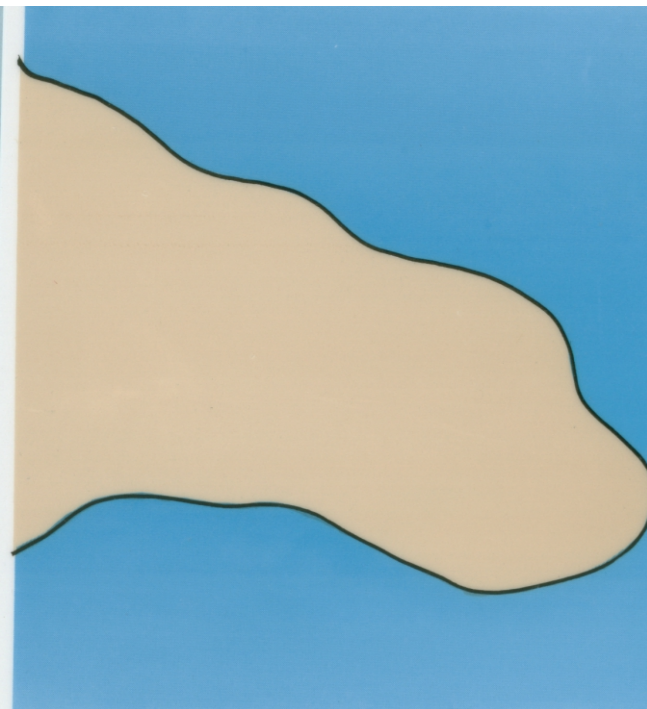


cape



chain of lakes

penninsula



structure at the top of the trachea that holds the vocal cords, which are responsible for producing sound.

Also called the voice box.

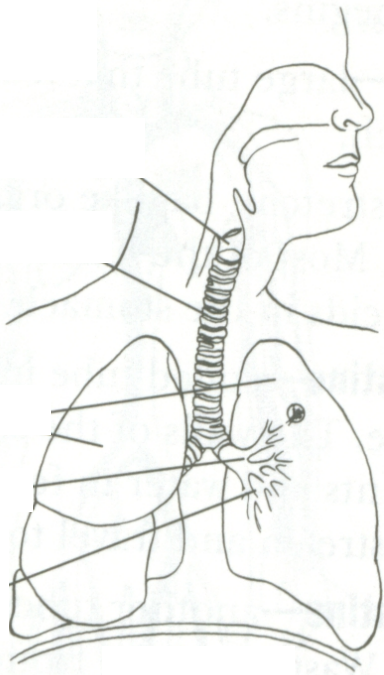
Air passageway from the mouth to the lungs.

Also called the windpipe.

Pair of organs in
which gas exchange
takes place.

Branches of the
trachea that enter
the lungs.

Small branches at
the ends of the
bronchi.



Sheet muscle
below the lungs.

Parts of the Respiratory System